



madebyzen™
— ENGLAND —

ENSO

Aroma Diffuser

Create a cool, scented and relaxing mist

TABLE OF CONTENTS:

A. About the ENSO

B. Specification

C. Operating Procedure

D. Maintenance

E. Troubleshooting

Congratulations on your purchase of the madebyzen™ Enso Aroma Diffuser. Please keep this manual for further reference and maintenance.



ABOUT THE ENSO

Cutting edge ultrasonic technology combined with modern design make the madebyzen™ Aroma Diffusers unique and attractive. Visually stimulating, our diffusers enrich your surroundings by creating a cool, scented, relaxing and magical mist.

Tap water and essential or fragrance oil is broken down into micro particles using ultrasonic technology, which is diffused into the air in the form of a fountain of fine water mist and fragrance/essential oil of your choice.

Create a healthy, relaxing and scented environment with the madebyzen™ Aroma Diffusers.

The Enso Aroma Diffuser is available in both Black and White and is classically timeless in design. The Enso will create a focal point in any space.

Congratulations on the purchase of your Enso Aroma Diffuser.



SPECIFICATION

PRODUCT NAME: Enso Aroma Diffuser

PRODUCT SIZE: Φ 107x212mm

VOLTAGE: DC 24V

POWER: 12W

MAX. WATER LOAD: 100ml

01. Cover

02. LED light

03. Vent hole

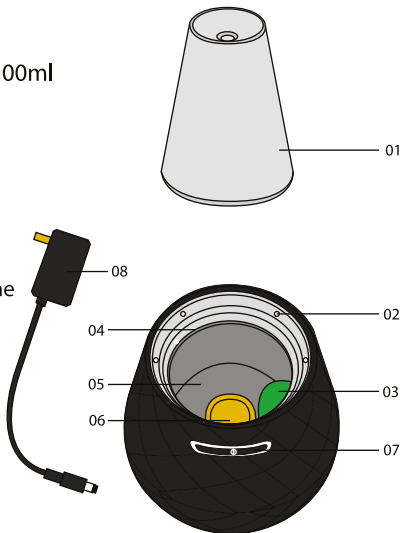
04. Max. water level line

05. Water tank

06. Ceramic disc

07. ON/OFF button

08. Adaptor





OPERATING PROCEDURE

IMPORTANT NOTES BEFORE USE:

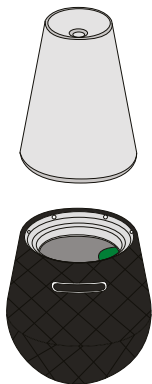
Place the Aroma Diffuser on a dry, even surface.

DO NOT use detergents, solvents or abrasive agents to clean the Aroma Diffuser.

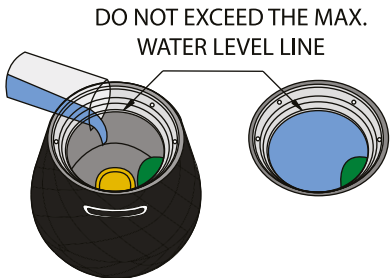
Use only clean water at room temperature to fill the water tank.

Disconnect the power from the Aroma Diffuser before performing machine maintenance and cleaning.

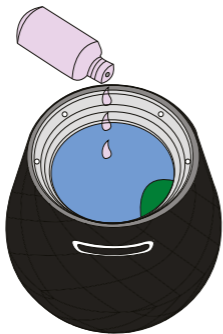
Corrosive oils such as Citrus, Cintronella and Lemon should be avoided as they can cause permanent damage to the unit.



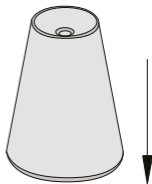
1. Remove the cover



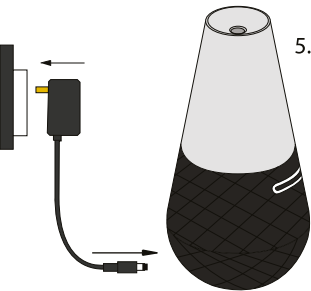
2. Fill tank with tap water
(Max 100ml)



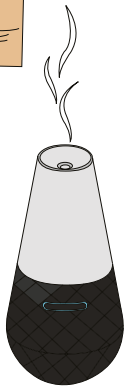
3. Add 3-5 drops of your favourite essential or fragrance oil



4. Replace the cover



5. Plug the adaptor into the mains and press the **⏻** button

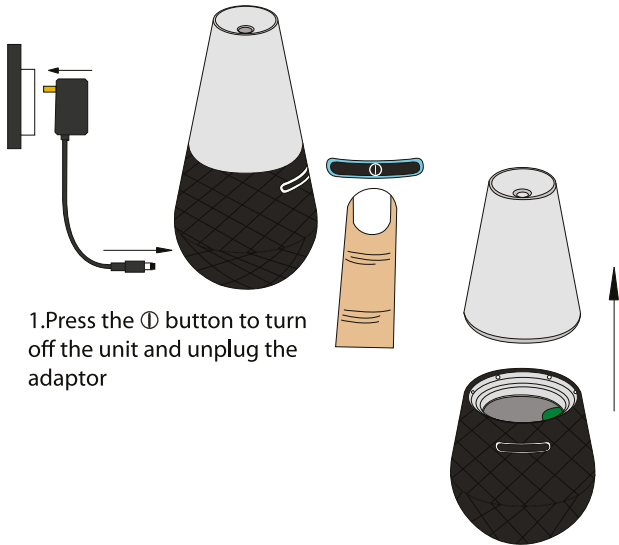


NOTE:

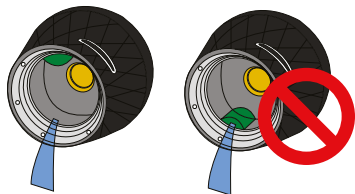
Do not tilt the unit whilst in operation



D MAINTENANCE



3. Empty remaining water by tilting the unit as shown below. (Opposite direction to the ON/OFF button)



WARNING:
DO NOT EMPTY WATER FROM THE
FRONT SIDE.

4. Use a clean swab and
cloth to clean the unit



NOTE:

It is recommended that the unit is emptied of any liquid residue and cleaned after every use. Keep clean and dry when not in use.





E TROUBLESHOOTING

SYMPTOM	POSSIBLE CAUSE	SOLUTION
NO MIST	Power supply is not connected	Plug in the adaptor and press the ① button
	Insufficient water	Refill with sufficient tap water
	Too much water (Exceeded max. water level line)	Pour out excess water
	The cover is blocked	Clean the cover and keep it ventilated
	The Ceramic Disc area is covered with a film of Oil.	Thoroughly clean the unit and if problem persists, contact your local dealer



IMPORTANT!

In accordance with WEEE Directive (Waste from Electrical and Electronic Equipment Directive) 2002/96/EC this equipment should not be disposed in the normal waste stream.

WARNING

In case of any abnormal observations such as smoke, peculiar smells or noise, stop using the unit immediately to avoid the risk of an accident such as fire or electric shock. You should unplug the adaptor immediately and contact your local dealer.

Never wrap the adaptor or aroma diffuser with cloth or paper, as blocking the ventilation could increase the risk of a fire.

Never attempt to disassemble or repair the product. In case of internal inspection or repair becoming necessary, please contact your local dealer.

Please keep the product out of the reach of children to avoid risk of any injury.

Your aroma diffuser should be cleaned regularly and kept clean and dry when not in use.

This appliance is not intended for use by persons (including children) with reduced physical, sensory or mental capabilities, or lack of experience and knowledge, unless they have been given supervision or instruction concerning the use of the appliance by a person responsible for their safety.

If the power cord is damaged, it must be replaced only with a suitable adaptor provided by the manufacturer or its agent. Alternatively, a new adaptor can be purchased from your Retailer.

Always unplug the Enso from the mains when cleaning or refilling with water.